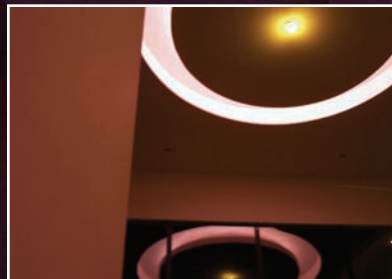
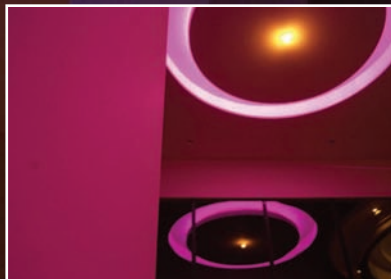


# PRODUCTS: POWER SUPPLY



# POWER SUPPLY



## 15W AC-DC [12V/1.25A] UNIVERSAL POWER SUPPLY

### FEATURES:

- 12V REGULATED OUTPUT
- 1.25 AMPS
- IN LINE EMI/RFI FILTER
- UNIVERSAL AC INPUT 90-264VAC
- LOW RIPPLE NOISE
- NO MINIMUM LOAD REQUIREMENT
- 100% BURN IN TEST
- ENERGY EFFICIENT SWITCHING TECHNOLOGY
- 1.8 METER OUTPUT CORD
- FEMALE PLUG: 5.5 X 2.1MM
- UL, CUL APPROVED

**ITEM#: IL-PS-12V-15W**



## 40 WATT 12V/3.5A SINGLE OUTPUT POWER SUPPLY

### FEATURES:

- COMPLIES WITH ROHS DIRECTIVE
- AC INPUT VOLTAGE RANGE: 85-264VAC
- INPUT FREQUENCY: 47-63HZ
- INRUSH CURRENT: COLD START, 20A/115V, 40A/230V
- INPUT LEAKAGE CURRENT: <0.7MA/230V
- LINE REGULATION (FULL LOAD):  $\pm 0.5\%$
- OUTPUT VOLTAGE ADJ. RANGE:  $\pm 10\%$
- OUTPUT OVERLOAD PROTECTION: 110-150%
- OUTPUT OVER VOLTAGE PROTECTION: 115-150%
- WITHSTAND VOLTAGE: I/P-O/P: 3.0KVAC/1MIN; I/P-F/G: 1.5KVAC/1MIN; O/P-F/G: 0.5KVAC/1MIN
- RISE TIME: 50MS@FULL LOAD (TYPICAL)
- HOLD UP TIME: 20MS@FULL LOAD (TYPICAL)
- OPERATING TEMP.& HUMIDITY: -10°C TO 50°C (14°F - 122°F), 20%-93%RH (NON-CONDENSING)
- STORAGE TEMP.& HUMIDITY: -20°C TO 85°C (-4°F - 185°F), 20%-93%RH (NON-CONDENSING)
- MTBF: 100,000 HOURS
- COOLING METHOD: CONVECTION
- UL REF. NUMBER: E258719
- EMC STANDARDS: GB9254, EN55022 CLASSB, EN55024, EN61000-3-2,3, EN61000-4-2,3,4,5,6,8,11

**ITEM# : IL-PS-12V-40W**

# POWER SUPPLY



## 60 WATT 12V/5A SINGLE OUTPUT POWER SUPPLY

### FEATURES:

- COMPLIES WITH ROHS DIRECTIVE
- AC INPUT VOLTAGE RANGE: 85-264VAC
- INPUT FREQUENCY: 47-63HZ
- INRUSH CURRENT: COLD START, 20A/115V, 40A/230V
- INPUT LEAKAGE CURRENT: <0.7MA/230V
- LINE REGULATION (FULL LOAD):  $\pm 0.5\%$
- OUTPUT VOLTAGE ADJ. RANGE:  $\pm 10\%$
- OUTPUT OVERLOAD PROTECTION: 110-150%
- OUTPUT OVER VOLTAGE PROTECTION: 115-150%
- WITHSTAND VOLTAGE: I/P-O/P: 3.0KVAC/1MIN; I/P-F/G: 1.5KVAC/1MIN; O/P-F/G: 0.5KVAC/1MIN
- RISE TIME: 50MS@FULL LOAD (TYPICAL)
- HOLD UP TIME: 20MS@FULL LOAD (TYPICAL)
- OPERATING TEMP.& HUMIDITY: -10°C TO 50°C (14°F - 122°F), 20%-93%RH (NON CONDENSING)
- STORAGE TEMP.& HUMIDITY: -20°C TO 85°C (-4°F - 185°F), 20%-93%RH (NON-CONDENSING)
- MTBF: 100,000 HOURS
- UL REF. NUMBER: E258719
- EMC STANDARDS: GB9254, EN55022 CLASSB, EN55024, EN61000-3-2,3, EN61000-4-2,3,4,5,6,8,11
- COOLING METHOD: CONVECTION

**ITEM# : IL-PS-12V-60W**



## 100WATT 12V/8.5A SINGLE OUTPUT POWER SUPPLY

### FEATURES:

- COMPLIES WITH ROHS DIRECTIVE
- AC INPUT VOLTAGE RANGE: 85-132/ 170-264VAC SELECTED BY SWITCH
- INPUT FREQUENCY: 47-63HZ
- INRUSH CURRENT: COLD START, 20A/115V, 40A/230V
- INPUT LEAKAGE CURRENT: <0.7MA/230V
- LINE REGULATION (FULL LOAD):  $\pm 0.5\%$
- OUTPUT VOLTAGE ADJ. RANGE:  $\pm 10\%$
- OUTPUT OVERLOAD PROTECTION: 110-130% CONSTANT CURRENT, AUTO RECOVERY
- OUTPUT OVER VOLTAGE PROTECTION: 115-150%
- WITHSTAND VOLTAGE: I/P-O/P: 3.0KVAC/1MIN; I/P-F/G: 1.5KVAC/1MIN; O/P-F/G: 0.5KVAC/1MIN
- RISE TIME: 50MS@FULL LOAD (TYPICAL)
- HOLD UP TIME: 20MS@FULL LOAD (TYPICAL)
- OPERATING TEMP.& HUMIDITY: -10°C TO 50°C (14°F - 122°F), 20%-93%RH (NON-CONDENSING)
- STORAGE TEMP.& HUMIDITY: -20°C TO 85°C (-4°F - 185°F), 20%-93%RH (NON-CONDENSING)
- MTBF: 100,000 HOURS
- UL REF. NUMBER: E258719 EMC STANDARDS: GB9254, EN55022 CLASSB, EN55024, EN61000-3-2,3, EN61000-4-2,3,4,5,6,8,11
- COOLING METHOD: CONVECTION

**ITEM#: IL-PS-12V-100W**

# POWER SUPPLY



## 150WATT 12V/12.5A SINGLE OUTPUT POWER SUPPLY

### FEATURES:

- COMPLIES WITH ROHS DIRECTIVE
- AC INPUT VOLTAGE RANGE: 85-132/ 170-264VAC SELECTED BY SWITCH
- INPUT FREQUENCY: 47-63HZ
- INRUSH CURRENT: COLD START, 20A/115V, 40A/230V
- INPUT LEAKAGE CURRENT: <0.7MA/230V
- LINE REGULATION (FULL LOAD): <math>\pm 0.5\%</math>
- OUTPUT VOLTAGE ADJ. RANGE:  $\pm 10\%$
- OUTPUT OVERLOAD PROTECTION: 110-130% CONSTANT CURRENT, AUTO RECOVERY
- OUTPUT OVER VOLTAGE PROTECTION: 115-150%
- WITHSTAND VOLTAGE: I/P-O/P: 3.0KVAC/1MIN; I/P-F/G: 1.5KVAC/1MIN; O/P-F/G: 0.5KVAC/1MIN
- RISE TIME: 50MS@FULL LOAD (TYPICAL)
- HOLD UP TIME: 20MS@FULL LOAD (TYPICAL)
- OPERATING TEMP.& HUMIDITY: -10°C TO 50°C (14°F - 122°F), 20%-93%RH (NON-CONDENSING)
- STORAGE TEMP.& HUMIDITY: -20°C TO 85°C (-4°F - 185°F), 20%-93%RH (NON-CONDENSING)
- MTBF: 100,000 HOURS
- UL REF. NUMBER: E258719
- EMC STANDARDS: GB9254, EN55022 CLASSB, EN55024, EN61000-3-2,3, EN61000-4-2,3,4,5,6,8,11
- COOLING METHOD: CONVECTION

**ITEM#: IL-PS-12V-150W**



## 12 VOLT 200 WATT SINGLE OUTPUT POWER SUPPLY

- SWITCH ABLE AC INPUT RANGES (85-132VAC & 170-264VAC)
- 12VDC OUTPUT @ 16.5 AMPS
- OVERLOAD (OVER CURRENT) SHORT CIRCUIT PROTECTION
- OVER VOLTAGE PROTECTION
- INTEGRATED COOLING FAN

**ITEM#: IL-PS-12V-200W**

# POWER SUPPLY



## 300 W, 12V/25A SINGLE OUTPUT POWER SUPPLY 500W, 12V/42A SINGLE OUTPUT POWER SUPPLY

### FEATURES:

- 300W/500W, 12V/25A
- HIGH RELIABILITY, LOW COST
- BUILT IN FAN SPEED CONTROL
- 100% FULL LOAD BURN-IN TEST
- PROTECTIONS: OVER CURRENT/ OVER VOLTAGE/ OVER TEMPERATURE/ SHORT CIRCUIT
- 1 YEAR WARRANTY
- DIMENSIONS: 9.64 X 4.96 X 2.6"

### SPECIFICATIONS:

- AC INPUT VOLTAGE RANGE: 90-130VAC
- INPUT FREQUENCY: 47-63HZ
- INRUSH CURRENT: COLD START, 40A
- INPUT LEAKAGE CURRENT: <0.7MA
- LINE REGULATION (FULL LOAD): < ±0.5%
- OUTPUT VOLTAGE ADJUST RANGE: ±10%
- OUTPUT OVER CURRENT PROTECTION: 110-130%, CURRENT LIMITING, AUTO RECOVERY
- OUTPUT OVER VOLTAGE PROTECTION: 115-150%
- WITHSTAND VOLTAGE: I/P-O/P: 1.5KVAC/1MIN: O/P-F/G: 0.5KVAC/1MIN
- RISE, HOLD UP TIME: 50MS, 20MS@FULL LOAD (TYPICAL)
- OPERATING TEMP & HUMIDITY: -10°C/+50°C, 20%-93%RH (NON-CONDENSING)
- STORAGE TEMP & HUMIDITY: -20°C/+85°C, 20%-95%RH (NON-CONDENSING)
- COOLING METHOD: FAN

ITEM#: **IL-PS-12V-300W**

ITEM#: **IL-PS-12V-500W**

## DIMMABLE LED POWER SUPPLY

### FEATURES:

- ETL CERTIFIED FOR NORTH AMERICA1 AND CE MARKED FOR EUROPE.
- 1 (TESTED TO ANSI/UL 60950-1, CAN/CSA C22.2 NO. 60950-1-03 AND EN 60950-1.
- BREAKTHROUGH SHORT CIRCUIT & OVERLOAD PROTECTION. PATENTED.
- LIMITED POWER SOURCE OUTPUT ALLOWS FOR CLASS 2 WIRING.
- MULTIPLE INPUT VOLTAGES 120 V, 240 V, AND 277 V, 50/60 HZ.
- OUTPUT CONFIGURABLE FOR 12 VDC OR 24 VDC UP TO 60 W.
- CAN BE DIMMED WITH STANDARD HOUSEHOLD DIMMER.
- NO EXTERNAL FUSING REQUIRED.
- CAN WITHSTAND A DIRECT SHORT CIRCUIT IN EXCESS OF 15 DAYS!
- TRANSFORMER FULLY ENCAPSULATED FOR PROTECTION AGAINST THE ELEMENTS.

ITEM#: **IL-DIM-60WPS**



## CLASS 2 SINGLE OUTPUT SWITCHING POWER SUPPLY

### FEATURES:

- CONSTANT CURRENT MODE POWER SUPPLY
- UNIVERSAL AC INPUT / FULL RANGE
- EPOXY ENCAPSULATED WITH IP67 LEVEL
- WITHSTAND 300VAC SURGE INPUT FOR 5 SECONDS
- PROTECTIONS: SHORT CIRCUIT / OVER CURRENT / OVER VOLTAGE
- FULLY ISOLATED PLASTIC CASE
- COOLING BY FREE AIR CONVECTION
- SMALL AND COMPACT SIZE
- UL 1310 CLASS 2 POWER UNIT
- 100% FULL LOAD BURN-IN TEST
- LOW COST, HIGH RELIABILITY
- SUITABLE FOR LED LIGHTING AND MOVING SIGN APPLICATIONS
- 2 YEARS WARRANTY

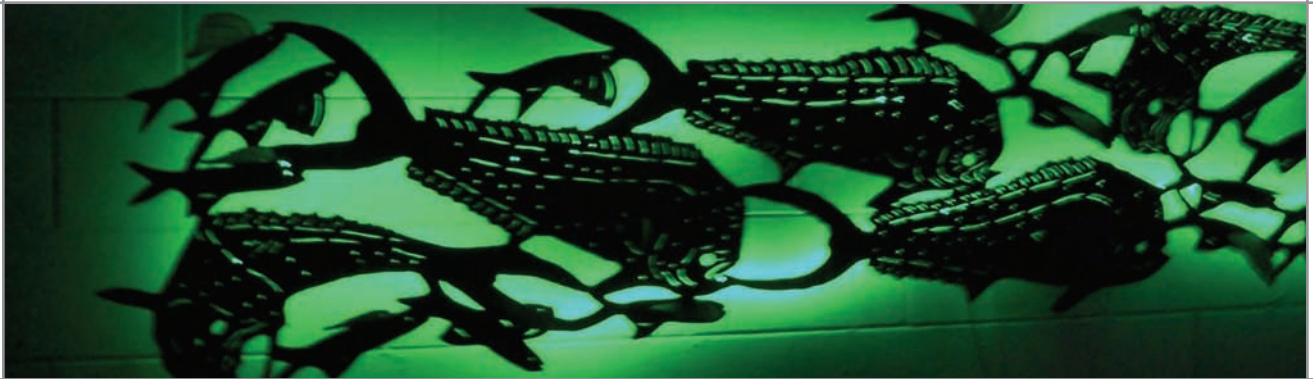


LPS IP67 CE

ITEM#: **IL-40W-PS-C2, IL-60W-PS-C2, IL-100W-PS-C2, IL-150W-PS-C2**



# POWER SUPPLY



## THE IMPACT SERIES 7.5W TO 100W LOW PROFILE DIN RAIL MOUNT POWER SUPPLIES

### LOW PROFILE FOR BUILDING AUTOMATION

- 5V TO 24V OUTPUTS
- WIDE RANGE AC INPUT
- UL1310 CLASS 2(1)
- CLASS II DOUBLE INSULATION
- 25 TO +71°C OPERATION
- CONVECTION COOLED
- DIN RAIL OR CHASSIS MOUNT

**FEATURE:** - LOW 2.2" PROFILE  
- WIDE RANGE AC  
- FULL POWER AT 61°C

**BENEFITS:** - FITS INTO WALL MOUNTED CABINETS  
- GLOBAL USE WITH NO INPUT SELECTOR SWITCHES  
- NO DERATING NEEDED

**ITEM#: IL-PS-IMPACT-SERIES**



## 6 VOLT POWER SUPPLY FOR THE PULSAR™ SYSTEM

- 6" CARD WITH MOLDED TERMINATION
- OUTPUT: 6VDC/.2A
- TERMINATION: 3.5MM MIN PHONE PLUG

**ITEM#: IL-PS-6V-200MA**



## AC OUTPUT TRANSFORMERS FOR IMPACT LIGHTING'S SIGNATURE™ SYSTEM

- SECONDARY: 12.6VCT, 2A
- 2.0"(H)X2.35"(W)X2.1"(D)
- 2 .9 MTG HOLES

**ITEM#: IL-PS-12V-AC-2A**



## ACCESSORIES

**POWER CORD** - POWER CORD TO CONNECT TO OUR POWER SUPPLY

**ITEM #: IL-PS-PC**



**RCA PLUG** - RCA PLUG TO CONNECT TO OUR POWER SUPPLY AND TO SOME CONTROLLERS

**ITEM #: IL-PS-RCA**